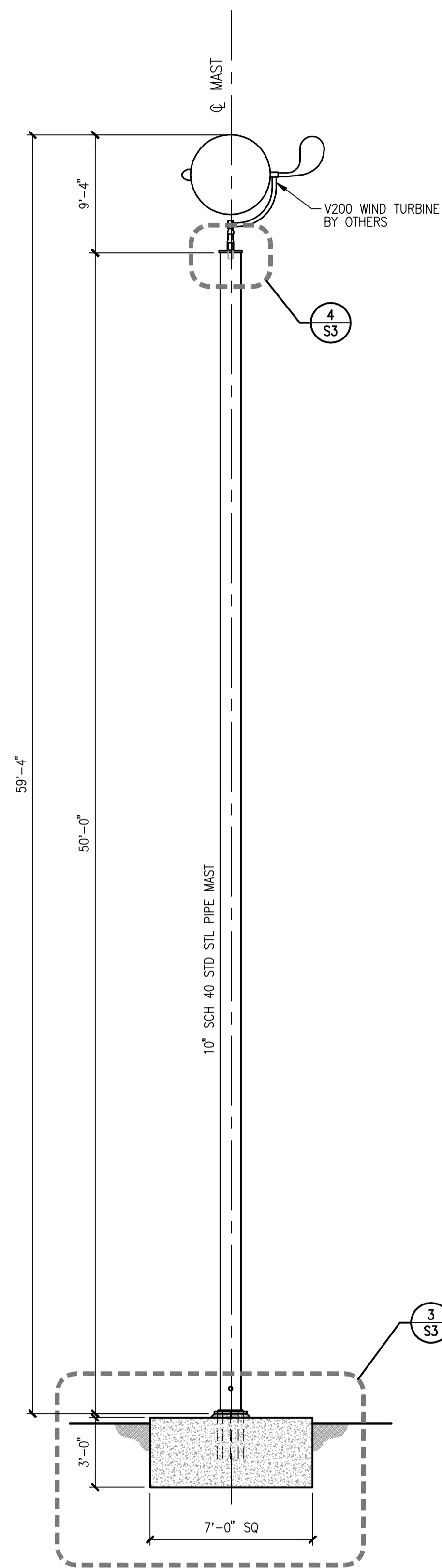


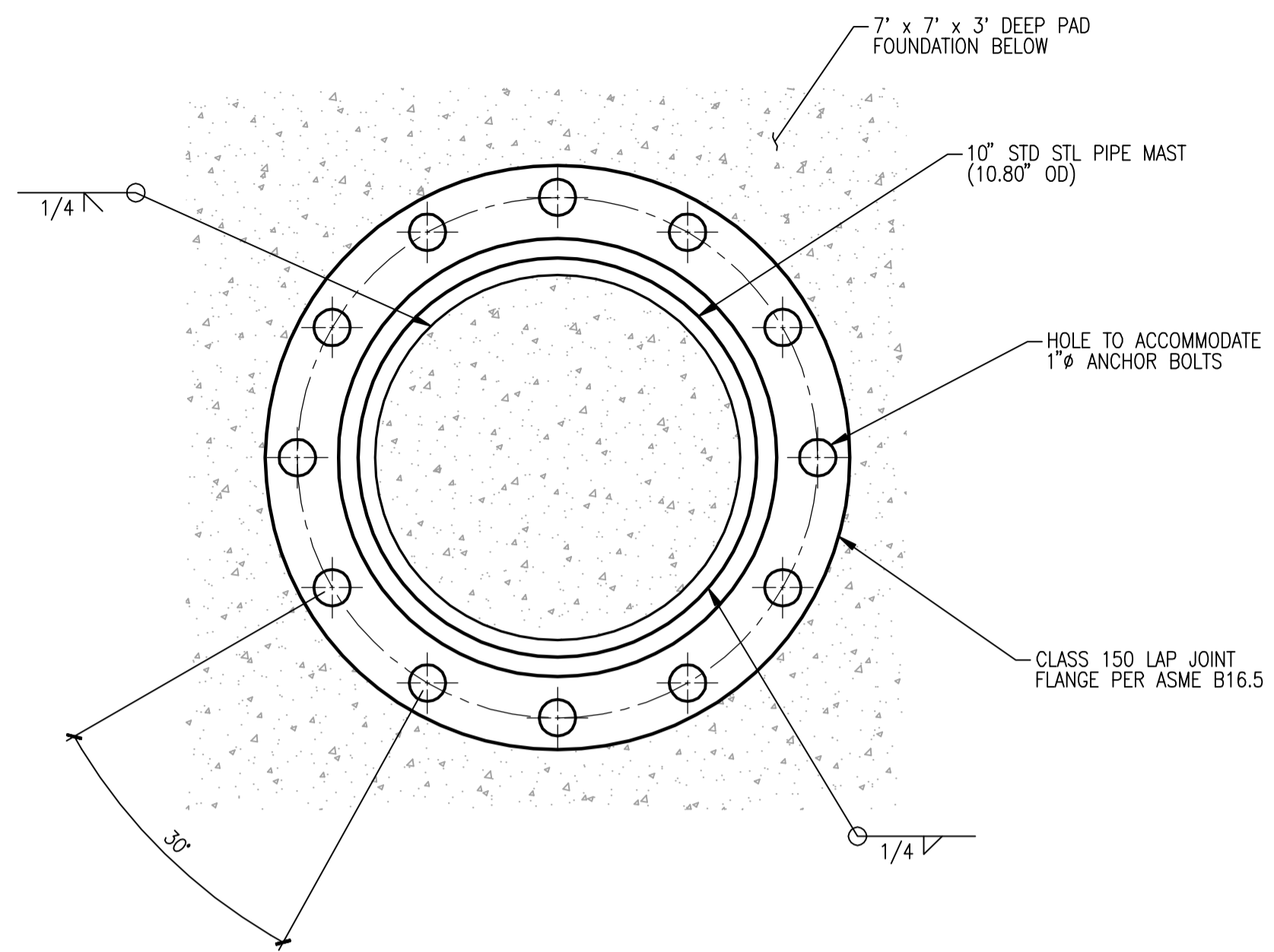
Drawing: P:\2010\10-122 NW Wind Cle Elum\Drawings\Construction\10122C-S3-0.dwg Plotted: Jun 28, 2010 - 3:27pm

DISCLAIMER

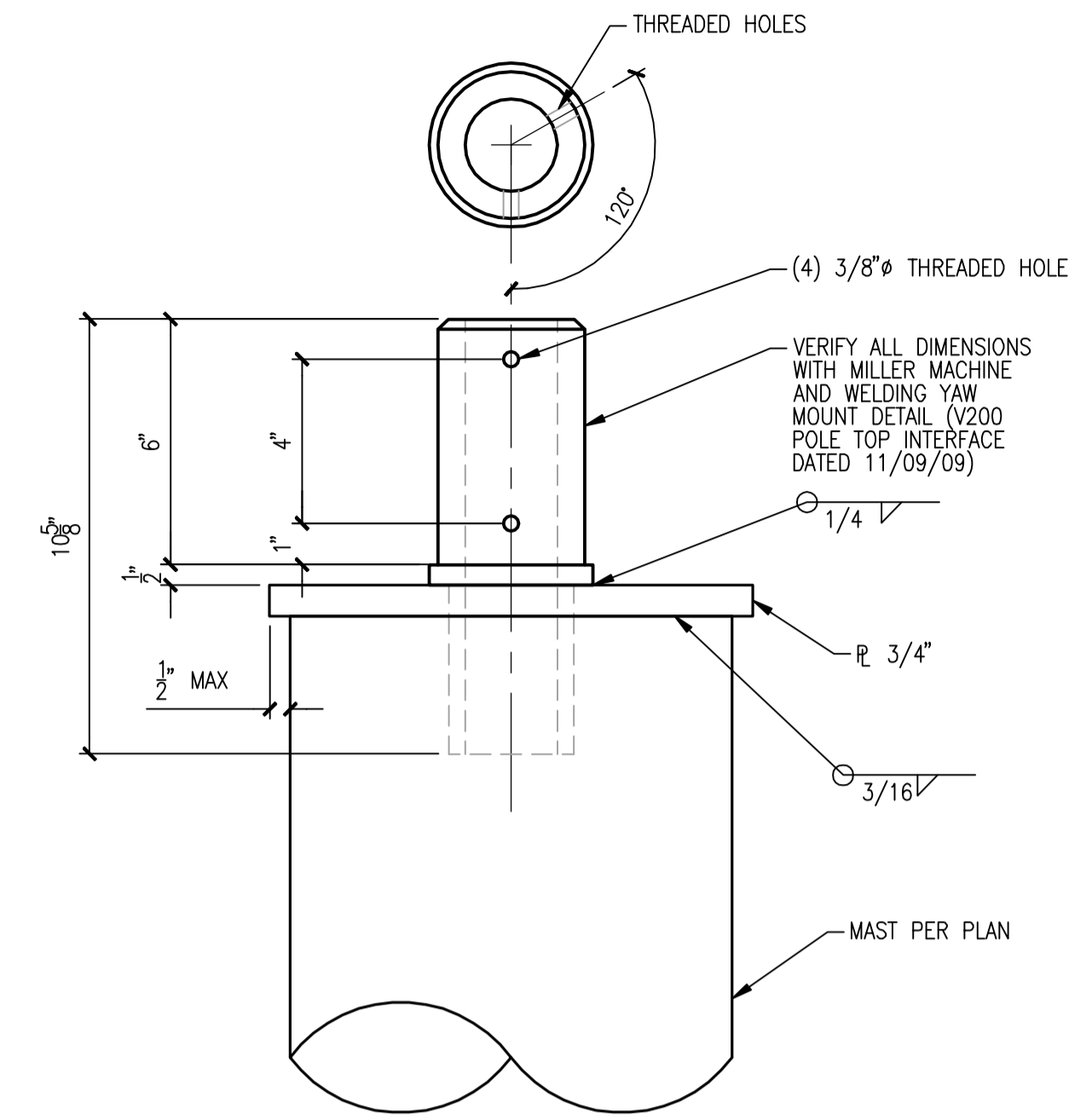
THIS DESIGN IS SITE SPECIFIC AND TAKES INTO CONSIDERATION THIS SPECIFIC SITES SEISMIC, WIND AND SOIL CONDITIONS. LDC ASSUMES NO LIABILITY FOR THE USE OF THIS DESIGN OTHER THAN FOR THIS SINGLE INSTALLATION AND SPECIFIC SITE. IF THE DESIGN IS DEVIATED FROM FOR ANY REASON LDC MUST BE CONTACTED FOR REVIEW AND APPROVAL OF ANY CHANGES TO THE DESIGN.



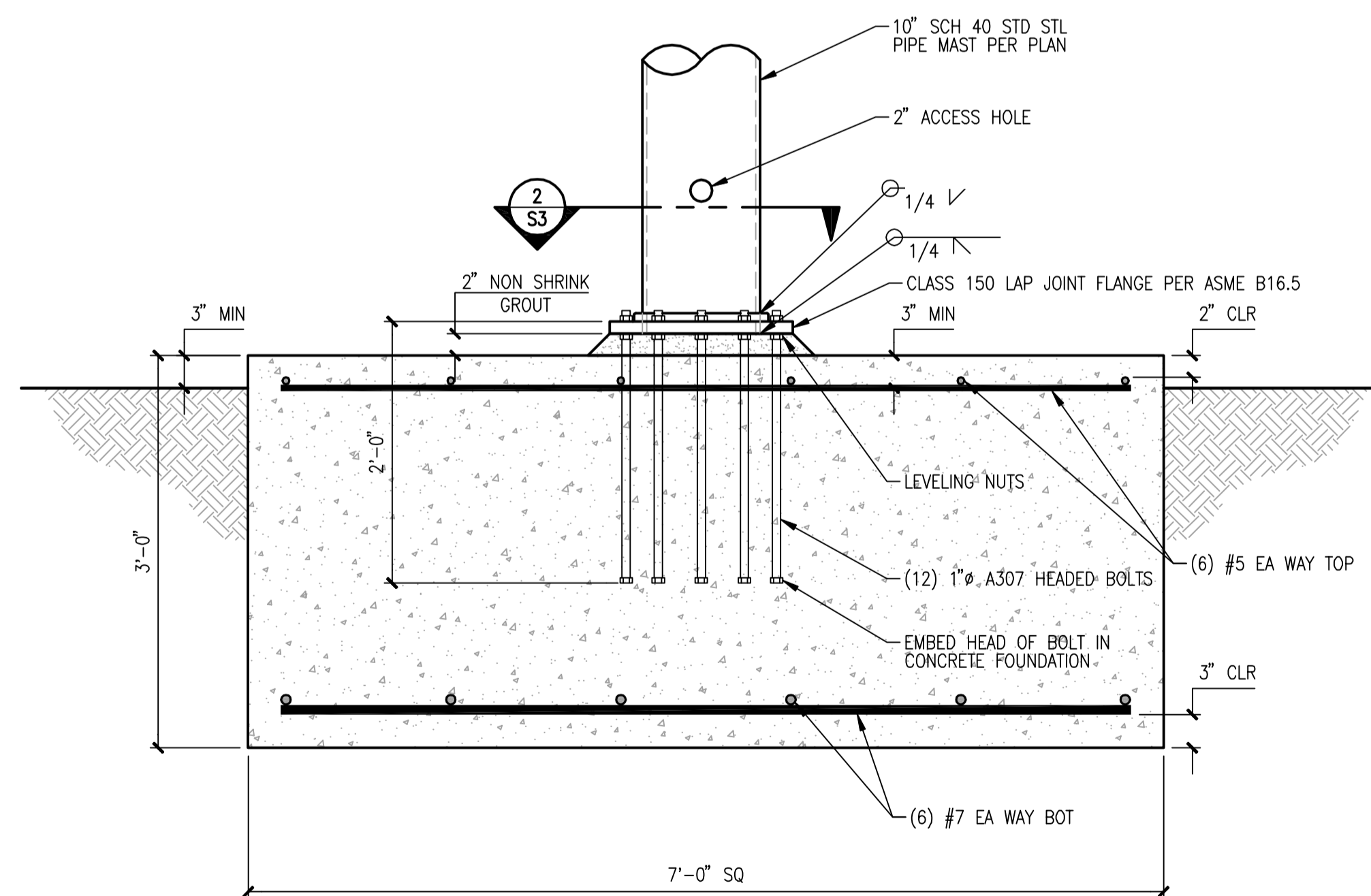
WIND TURBINE ELEVATION
SCALE: 1/4" = 1'-0" **1**



FLANGE DETAIL
SCALE: 3" = 1'-0" **2**



YAW MOUNT ATTACHMENT
SCALE: 3" = 1'-0" **4**



FOUNDATION SECTION
SCALE: 1" = 1'-0" **3**

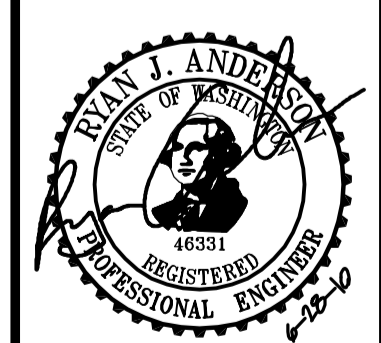
NOT USED
SCALE: NTS **5**

NO.	DATE	DESCRIPTION	BY
1	6-28-10	FOUNDATION REVISION	RJA

NORTHWEST
WINDPOWER
www.nwwindpower.net
Ph. 888.712.8088

LDC
THE CIVIL ENGINEERING GROUP
1501 NE 20th St. #100
Woodman, WA 98072
Ph. 425.845.8889
Ft. 425.845.2285
www.LDCorp.com

NORTHWEST WINDPOWER
CLE ELUM
STRUCTURAL DETAILS



JOB NUMBER: 10-122
DRAWING NAME: 10122C-S3-0
DESIGNER: RJA
DRAFTING BY: RJA
DATE: 6-16-10
SCALE: AS NOTED
JURISDICTION: KITTITAS COUNTY

S3
SHEET 3 OF 3